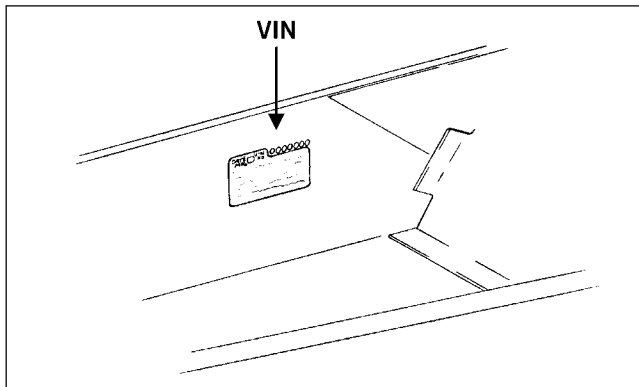

General Specifications

■ **NOTE:** General specifications for each 2007 Arctic Cat Snowmobile can be accessed from the Arctic Cat Cat Tracker Dealer Communication System on-line.

Snowmobile Identification

The Arctic Cat Snowmobile has two important identification numbers. The Vehicle Identification Number (VIN) is stamped into the tunnel near the right-side footrest. The Engine Serial Number (ESN) is stamped into the crankcase of the engine.



0726-383

These numbers are required to complete warranty claims properly. No warranty will be allowed by Arctic Cat Inc. if the engine serial number or VIN is removed or mutilated in any way.

Recommended Gasoline and Oil

RECOMMENDED GASOLINE

The recommended gasoline to use in these snowmobiles is 87 minimum octane regular unleaded. In many areas, oxygenates (either ethanol or MTBE) are added to the gasoline. Oxygenated gasolines containing up to 10% ethanol or up to 15% MTBE are acceptable gasolines. Do not use gasolines containing methanol.

⚠ CAUTION

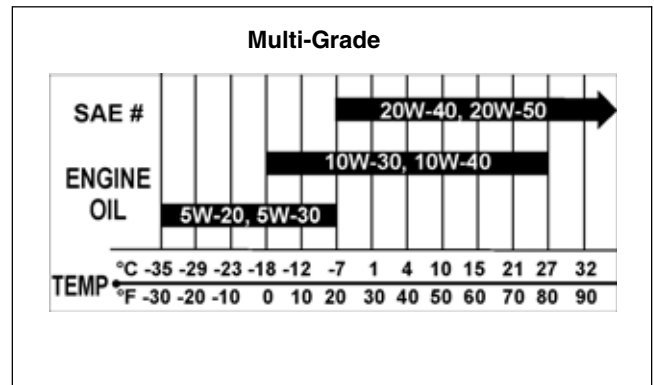
Do not use white gas or gasoline containing methanol. Only Arctic Cat approved gasoline additives should be used.

RECOMMENDED OIL (120 cc)

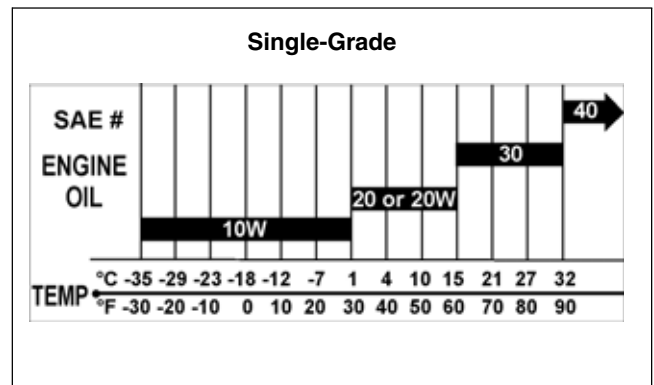
The recommended oil to use is a multi-grade or single-grade engine grade oil calibrated to the ambient temperature at which the engine is run. See the viscosity charts for details.

⚠ CAUTION

Any oil used in place of the recommended oil may cause serious damage.



GEN-0048



GEN-0049

RECOMMENDED OIL (660 cc/1100 cc Z1)

The recommended oil to use is 0W-30 for the 660 cc non-turbo models in all temperatures and conditions and Synthetic Turbo 0W-40 Oil (p/n 3639-510) for the 660 cc turbo models and the 1100 cc Z1 model in all temperatures and conditions.

⚠ CAUTION

Any oil used in place of the recommended oil may cause serious damage.